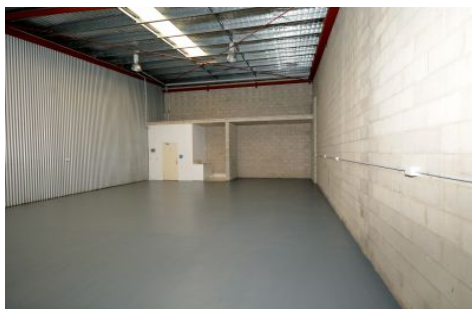


FORDE



8/25 Project Avenue Noosaville QLD

- Clear span warehouse approximately 160 m2
- Suitable for a variety of commercial uses
- High roller door access
- Ample courtyard parking
- Includes air conditioned office, toilet and kitchenette
- Adjoining warehouse 160 sqm also available total amalgamated area approx 320sqm

Available to lease now phone Connor Weldon 0402 159 213 or Donna Ingram 0413 547 914

Building Size : 161 sqm
View : <https://www.fordeproperty.com.au/lease/qld/sunshine-coast/noosaville/commercial/industrial/6051327>



Donna Ingram
07 5447 5554