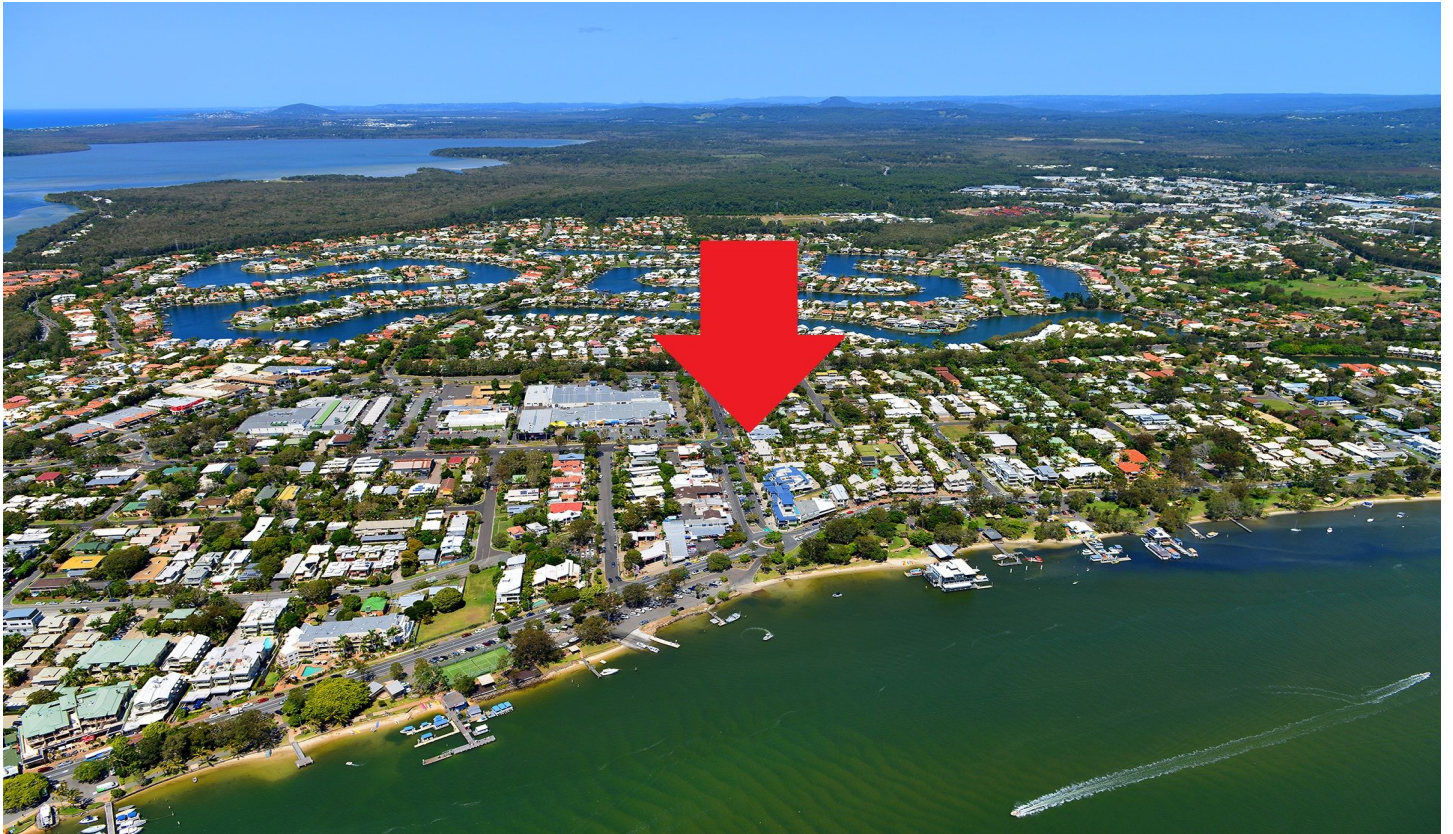


FORDE



1/187 Gympie Terrace Noosaville QLD

- Ideal Investment Dual Income - Commercial Premises and Townhouse
- Located in Attractive Complex adjacent to Noosa River
- Surrounded by a Great Selection of Mixed Businesses
- Popular Salon with Established Operator on Long Term Lease
- Long Term Residential Tenancy - 3 year Lease
- Current Net Income circa \$56,000
- Value added with Strong Rental Upside

For more information please contact Tom Forde 0417 333 335 or Donna Ingram 0413 547 914 today!

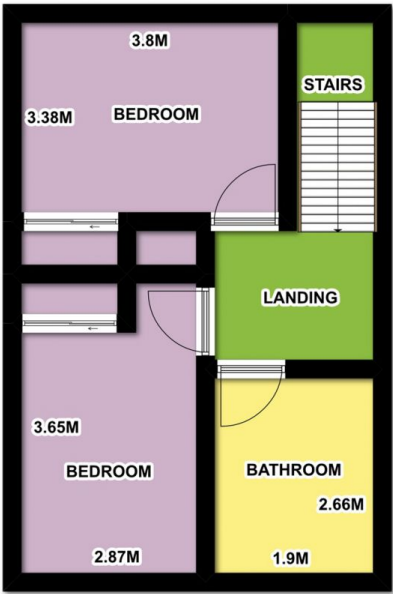
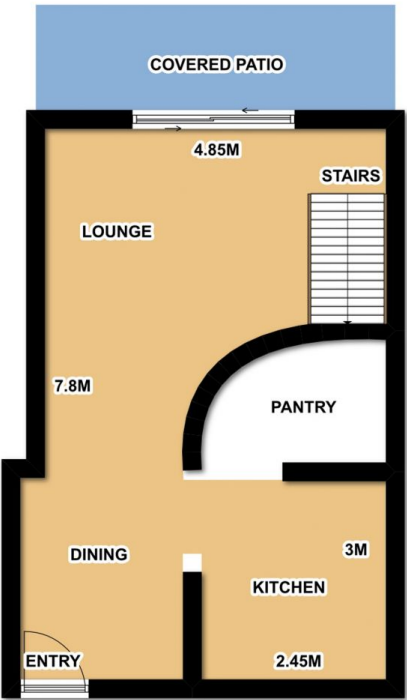
Building Size : 70 sqm
Land Size : 70 sqm
View : <https://www.fordeproperty.com.au/sale/qld/sunshine-coast/noosaville/commercial/retail/6051721>



Tom Forde
07 5447 5554



Donna Ingram
07 5447 5554

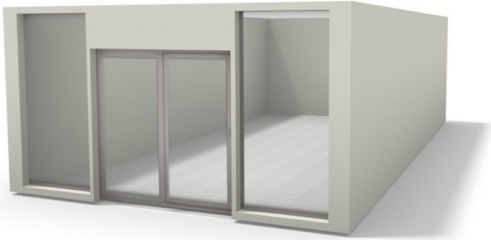
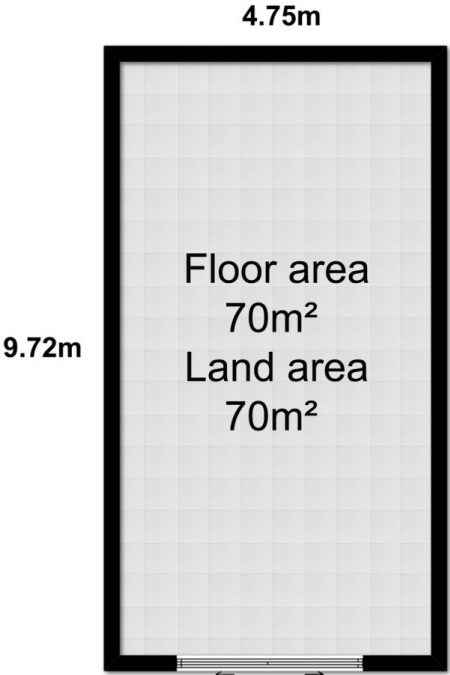


Artist Impression

This floor plan is conceptual only. It is provided for illustrative purposes only and should not be relied upon. We make no guarantee as to the accuracy of this plan. All interested parties should make and rely on their own enquiries in determining the accuracy of the information contained in this floor plan.

#NOT TO SCALE

1/187 Gympie Terrace, Noosaville QLD



Artist Impression

This floor plan is conceptual only. It is provided for illustrative purposes only and should not be relied upon. We make no guarantee as to the accuracy of this plan. All interested parties should make and rely on their own enquiries in determining the accuracy of the information contained in this floor plan.

#NOT TO SCALE

1/187 Gympie Terrace, Noosaville QLD