

# FORDE



## 5 Lunar Crescent Noosa Heads QLD

4 2 1

With interest levels in Noosa Heads rising now is the time to unearth the potential of 5 Lunar Crescent.

Nestled at the end of a quiet cul-de-sac this 650m2 block features a two storey A frame designed home with ample space to create the perfect lifestyle for you! The Property needs love and attention and is crying out for a makeover.

Lunar Crescent is ideally located within walking distance to shops, Restaurants, Noosa main Beach and the Sunday farmers market.

Current features include:

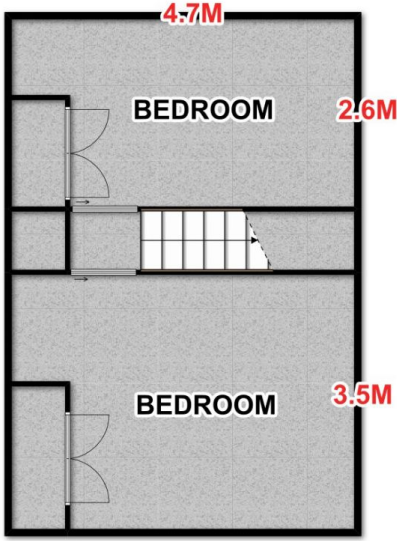
- 4 Bedrooms
- Main includes en-suite and private deck
- Large Veranda
- Open plan kitchen and dining

**View :** <https://www.fordeproperty.com.au/sale/qld/sunshine-coast/noosa-heads/residential/house/6051743>

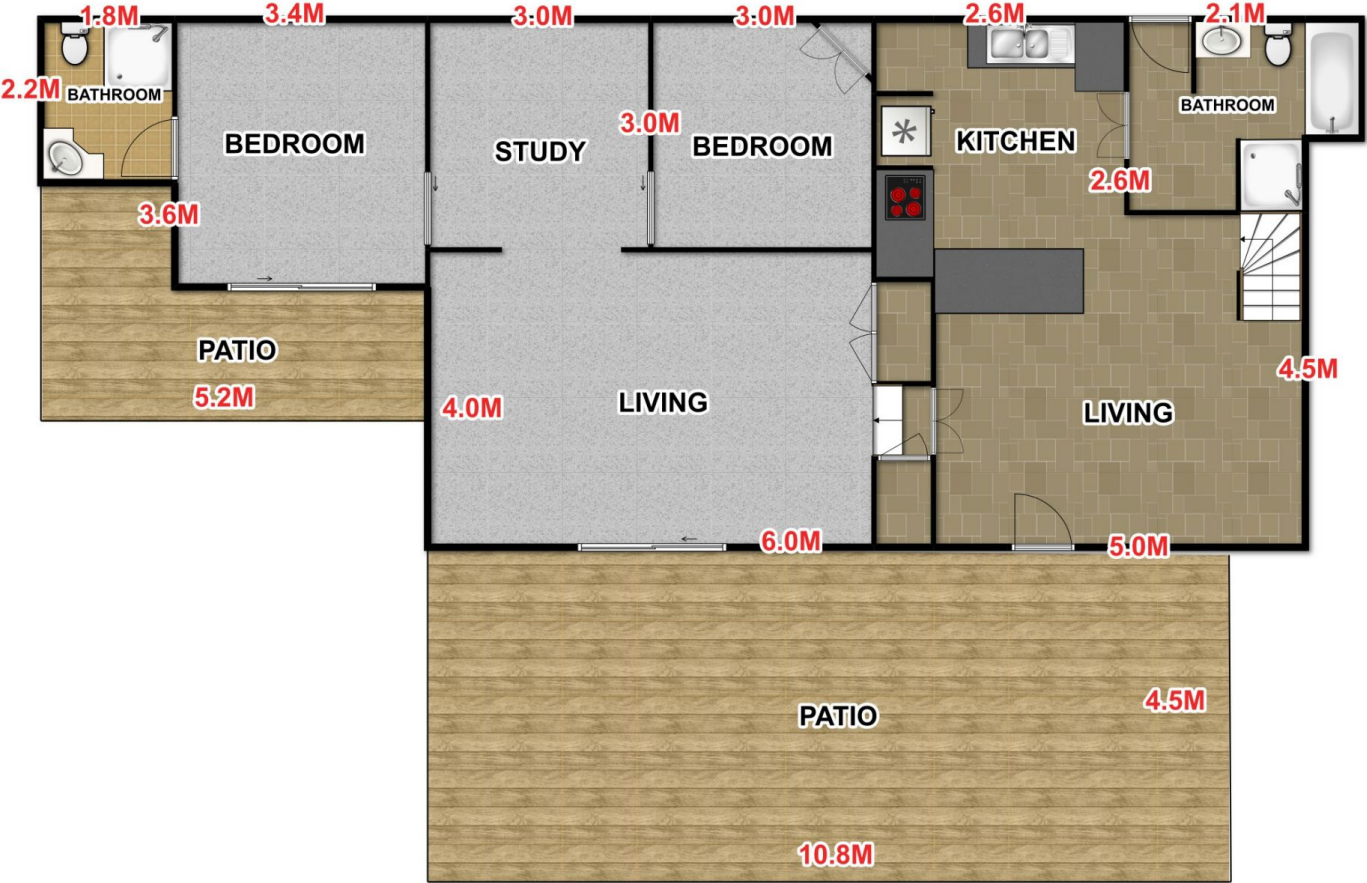


**Matthew Forde**  
0427 457 546

## Upper Level



## Lower Level



This floor plan is conceptual only. It is provided for illustrative purposes only and should not be relied upon. We make no guarantee as to the accuracy of this plan. All interested parties should make and rely on their own enquiries in determining the accuracy of the information contained in this floor plan.

#NOT TO SCALE

5 Lunar Crescent, Noosa Heads