

FORDE



2/20-22 Venture Drive Noosaville QLD

PRICE REDUCED

Industrial style unit available for lease in popular new Venture Drive development.

- ? Unit 2 - 129m² ground floor with mezzanine of 44m²
- ? Modern & stylish Showroom/Warehouse style units
- ? Attractive courtyard garden
- ? Kitchenette and bathroom facilities including shower

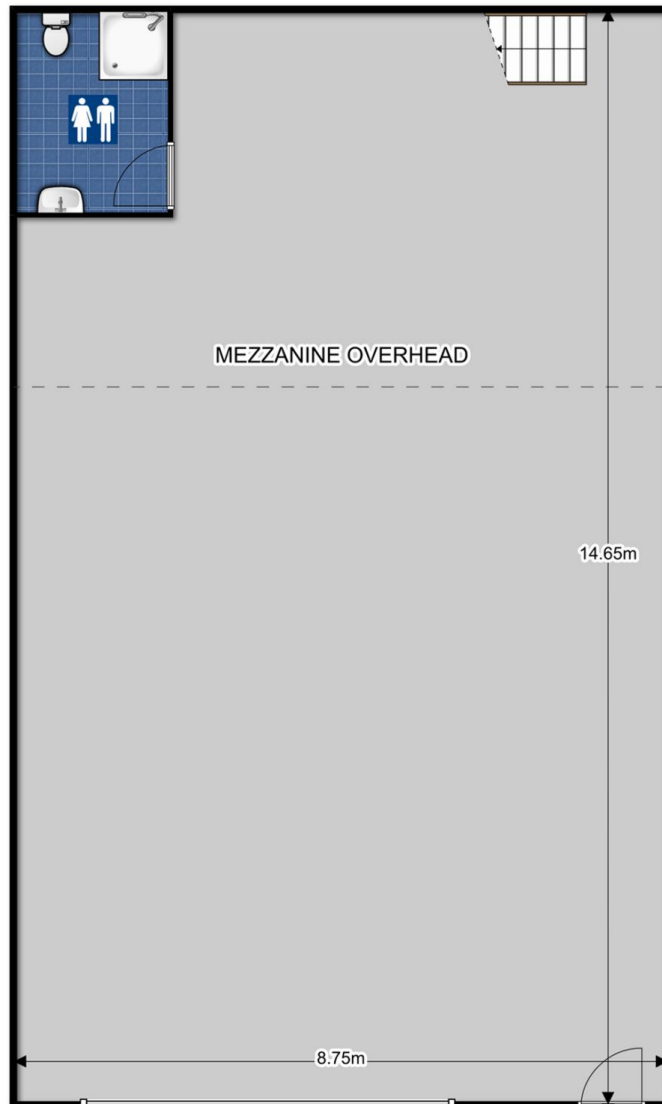
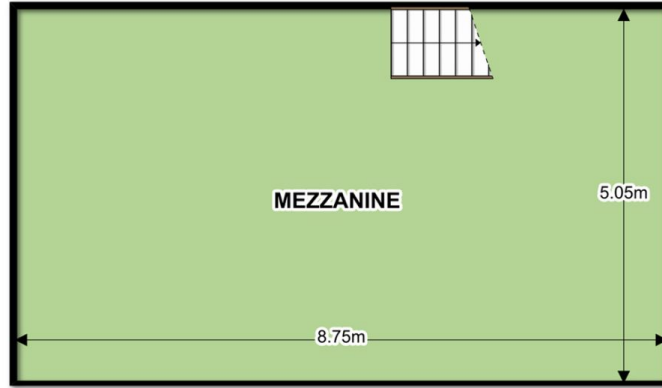
For further information or to arrange an inspection, please contact Donna Ingram 0413 547 914 or James Jansen 0457 600 230.

Building Size : 173 sqm

View : <https://www.fordeproperty.com.au/lease/qld/sunshine-coast/noosaville/commercial/industrial/6051805>



Donna Ingram
07 5447 5554



ARTIST ILLUSTRATION

THIS FLOOR PLAN IS CONCEPTUAL ONLY, IT IS PROVIDED FOR ILLUSTRATIVE PURPOSES AND SHOULD NOT BE RELIED UPON. WE MAKE NO GUARANTEE AS TO THE ACCURACY OF THIS PLAN. ALL INTERESTED PARTIES SHOULD MAKE AND RELY ON THEIR OWN ENQUIRIES IN DETERMINING THE ACCURACY AND INFORMATION CONTAINED ON THIS FLOOR PLAN.