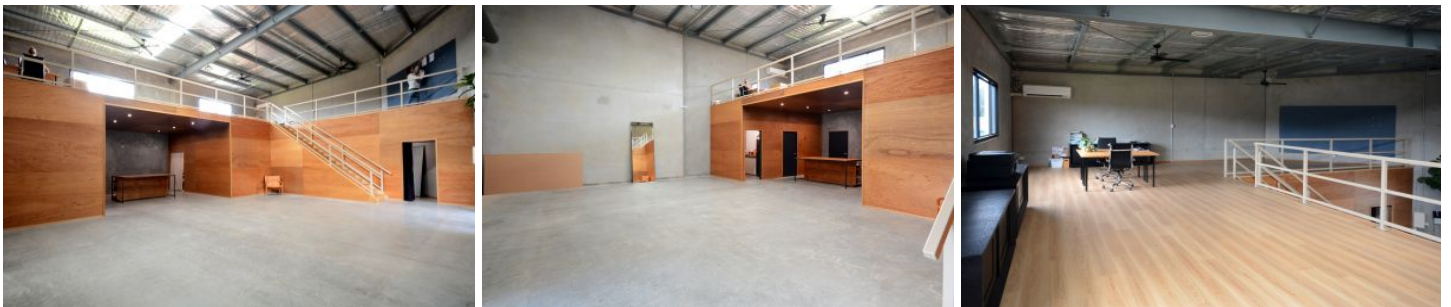


# FORDE



## 8/20-22 Venture Drive Noosaville QLD

Beautifully finished and available now

- Unit 8 - 162.6m<sup>2</sup> + 78.6m<sup>2</sup> Mezzanine, total area 241.2m<sup>2</sup>
- Showroom/Warehouse style
- High bay roller door 4.2m high by 3.6m wide
- Easy semi trailer access
- Exclusive use of a 3.2 m deep back yard area
- Attractive courtyard parking
- Kitchenette and shower
- Fully air conditioned
- 2 exclusive car spaces

Please contact Donna Ingram on 0413 547 914. We look forward to your enquiry!

**Building Size** : 241.2 sqm

**View** : <https://www.fordeproperty.com.au/lease/qld/sunshine-coast/noosaville/commercial/industrial/6051888>



**Donna Ingram**  
**07 5447 5554**

