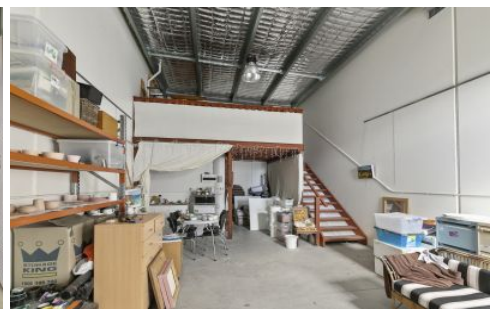


FORDE



4/53 Gateway Drive Noosaville QLD

Forde Property are pleased to offer to the market this affordable, modern looking commercial warehouse for sale.

- Warehouse: 53m² ground and 13m² mezzanine approx.
- Amenities include kitchenette, and toilet.
- High Bay Auto roller door.
- 3 Phase available.

Located in the popular Noosaville Industrial area on Gateway Drive and is well positioned among other professional units in this tidy complex of six.

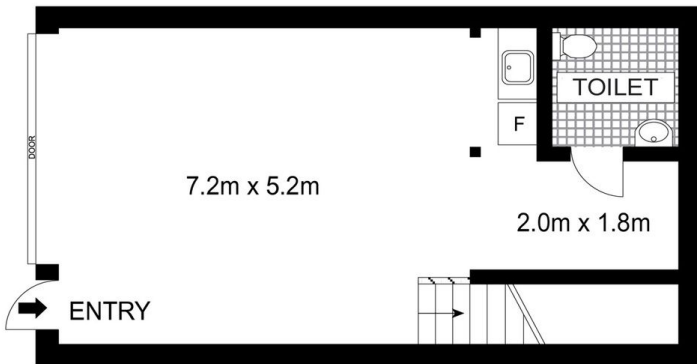
Suitable for the owner/occupier or investor and ideal for storage or running a small business.

For further information or to arrange an inspection please contact Donna Ingram.

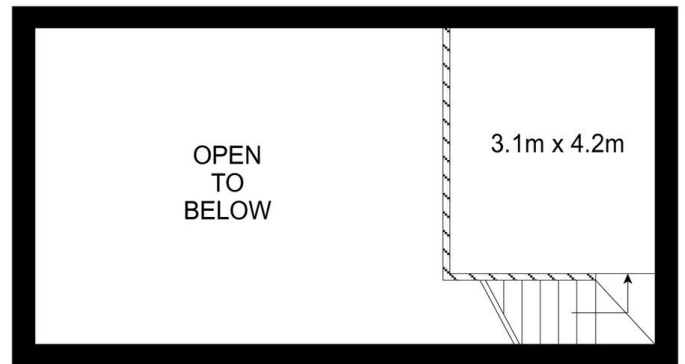
Building Size : 66 sqm
View : <https://www.fordeproperty.com.au/sale/qld/sunshine-coast/noosaville/commercial/industrial/6433929>



Donna Ingram
07 5447 5554



GROUND FLOOR



FIRST FLOOR



INT: 65 m²

Scale in metres. Indicative only. Dimensions are approximate. All information contained herein is gathered from sources we believe to be reliable. However, we cannot guarantee its accuracy and interested persons should rely on their own enquiries.

4/53 Gateway Drive, Noosaville

