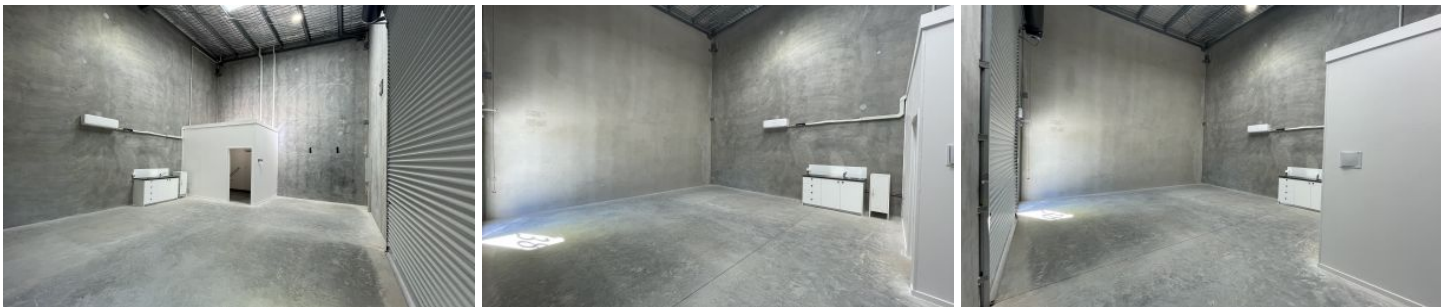


FORDE



38/64 Gateway Drive Noosaville QLD

2 

Brand new Tilt slab warehouse

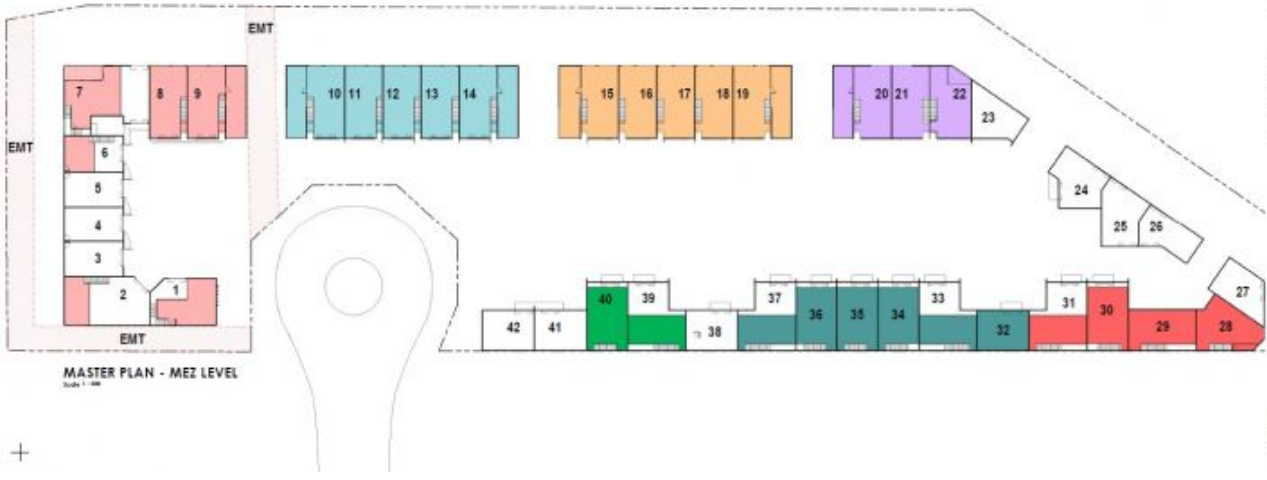
- Quality industrial building 66m² with high bay roller door.
- Multipurpose space suitable for wholesale, distribution, office, workspace or storage.
- Full amenities including kitchenette, shower and toilet.
- NBN fibre to premises, two allocated car spaces, A/C and solar.
- Available soon.

For further information please contact Donna Ingram 0413 547 914.

Building Size : 66 sqm
View : <https://www.fordeproperty.com.au/lease/qld/sunshine-coast/noosaville/commercial/industrial/6664855>



Donna Ingram
07 5447 5554



1. 001A 01
 2. 001B 01
 3. 002 01
 4. 003 01
 5. 004 01
 6. 005 01
 7. 006 01
 8. 007 01
 9. 008 01
 10. 009 01
 11. 010 01
 12. 011 01
 13. 012 01
 14. 013 01
 15. 014 01
 16. 015 01
 17. 016 01
 18. 017 01
 19. 018 01
 20. 019 01
 21. 020 01
 22. 021 01
 23. 022 01
 24. 023 01
 25. 024 01
 26. 025 01
 27. 026 01
 28. 027 01
 29. 028 01
 30. 029 01
 31. 030 01
 32. 031 01
 33. 032 01
 34. 033 01
 35. 034 01
 36. 035 01
 37. 036 01
 38. 037 01
 39. 038 01
 40. 039 01
 41. 040 01
 42. 041 01
 43. 042 01

Project:
NOOSVILLE SMART HUB
 44 GATEWAY DRIVE
 NOOSVILLE QLD 6544
 Designer: HCB
 Drawing No: HCB

MASTER FLOOR PLAN

19020 A.200

Scale: 1" = 40'