

FORDE



1/8 Venture Drive Noosaville QLD

Forde Property is pleased to present shop 1/8 Venture Drive, Noosaville for Lease.

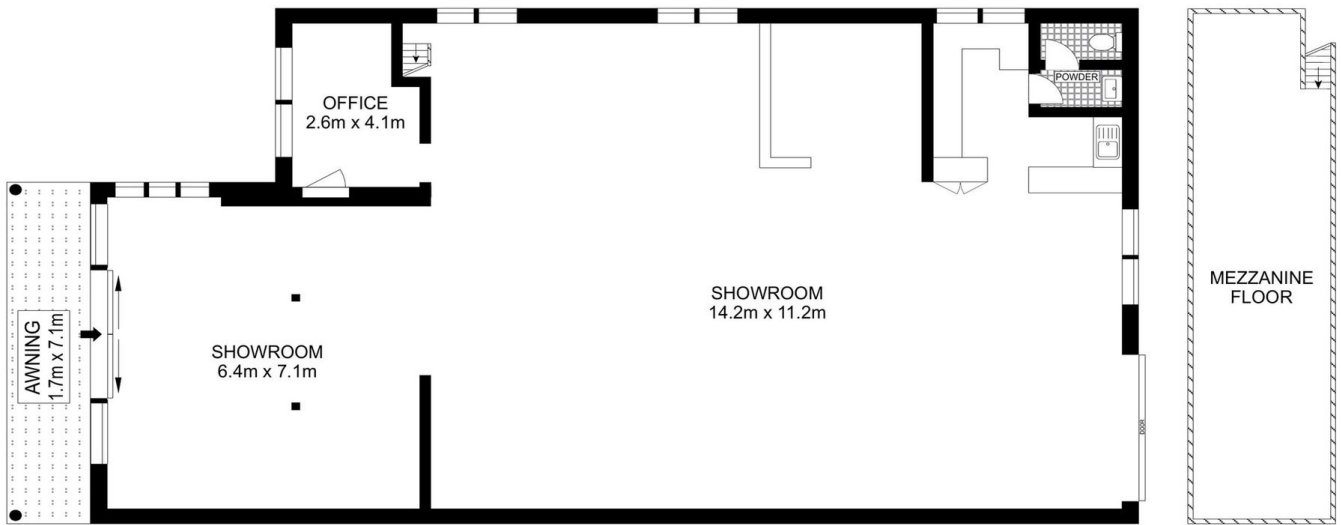
- Versatile showroom with open plan warehouse and roller door access
- Mezzanine office & storage
- Ground level 220m2 approx + 30 m2 Mezz
- Additional exterior undercover area 15m2
- Total 265 m2 lettable space with seven designated car parks
- Available 2 Sept 2022

For further details contact Donna Ingram 0413 547 914

Building Size : 240 sqm
Land Size : 215 sqm
View : <https://www.fordeproperty.com.au/lease/qld/sunshine-coast/noosaville/commercial/showroomsbulky-goods/7032206>



Forde Property
07 5447 5554



INT: 250 m²
EXT: 13 m²

Scale in metres. Indicative only. Dimensions are approximate. All information contained herein is gathered from sources we believe to be reliable. However, we cannot guarantee its accuracy and interested persons should rely on their own enquiries.

1/8 Venture Drive, Noosaville

