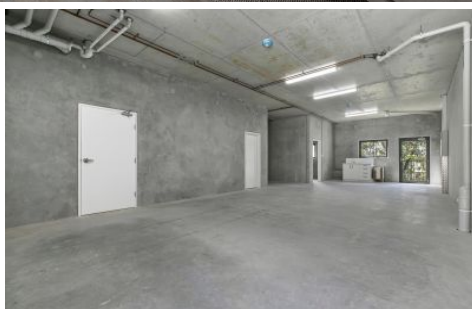


FORDE



Level Stage 2/64 Gateway Drive Noosaville QLD

2 1 2

Forde Property is pleased to offer to the market for sale, the last two bedroom apartment with warehouse unit in Stage 2 of the brand new 64 Gateway Drive, Noosaville Smart Hub. The building is complete and ready to occupy now.

This new world class complex features a distinctive green zone around its perimeter, sophisticated energy options, private courtyards and garden spaces. These very unique buildings also have water aspects adjoining Lake Doonella. The stylish industry hub is located right in the middle of Noosa and provides that much sought after sea change lifestyle.

Unit 21 - 85m2 warehouse + 75m2 two bedroom residence.

Warehouse has roller door, kitchenette and disabled

Price : \$1.1m
Building Size : 160 sqm
View : <https://www.fordeproperty.com.au/sale/qld/sunshine-coast/noosaville/residential/unit/7507776>



Donna Ingram
07 5447 5554

<https://www.fordeproperty.com.au>