

FORDE



3/53 Gateway Drive Noosaville QLD



Forde Property are pleased to offer to the market for Lease Unit 3 of 53 Gateway Drive, Noosaville. The property offers convenient location in the heart of the Noosaville Industrial precinct with airconditioned office space.

- Warehouse: 63 m2 Mezz: 31m2 approx.
- Full amenities include kitchenette & bathroom facilities
- Excellent internal height
- Roller door
- On site car parking
- Air conditioned office and warehouse
- Flexible storage, warehousing or combination workspace.
- Huge amount of cupboards and storage space.

For further information or to arrange an inspection please

[For full version visit the website](https://www.fordeproperty.com.au)

Type : Industrial
Price : \$2,185 P/M + Outs + GST
Building Size : 94 sqm
Land Size : 63 sqm
View : <https://www.fordeproperty.com.au/lease/qld/sunshine-coast/noosaville/commercial/industrial/8263481>

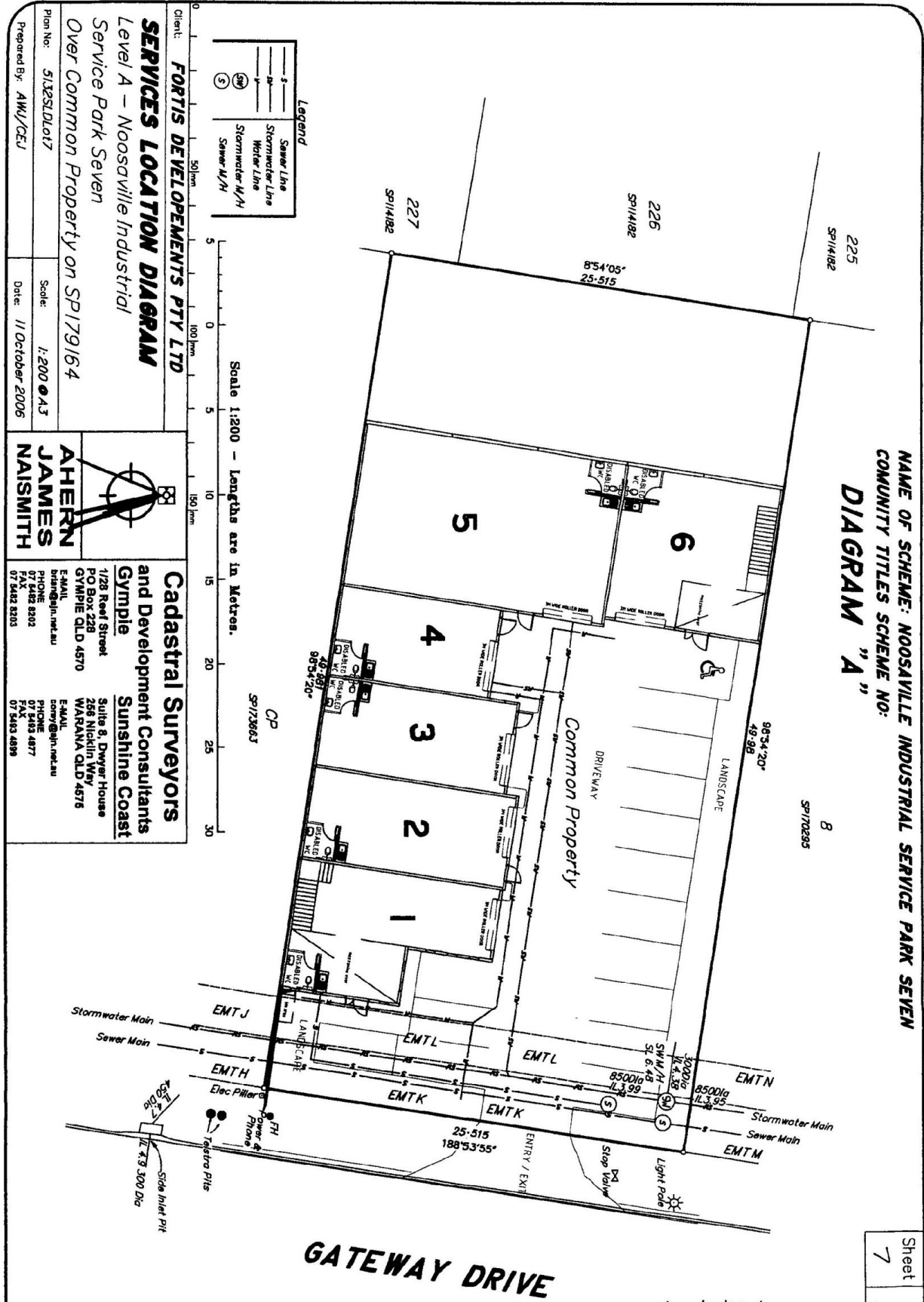


Donna Ingram
07 5447 5554

<https://www.fordeproperty.com.au>

NAME OF SCHEME: NOOSAVILLE INDUSTRIAL SERVICE PARK SEVEN
 COMMUNITY TITLES SCHEME NO:
DIAGRAM "A"

Sheet
 7



Client: **FORTIS DEVELOPMENTS PTY LTD**
SERVICES LOCATION DIAGRAM
 Level A – Noosaville Industrial
 Service Park Seven
 Over Common Property on SP179164

Plan No: 5132SLD17
 Scale: 1:200 @ A3
 Prepared By: AMW/CEJ
 Date: 11 October 2006

AHERN JAMES NAISMITH

Cadastral Surveyors and Development Consultants
Gymple
 1/28 Reef Street
 PO Box 228
 GYMPIE QLD 4570

Sunshine Coast
 Suite 8, Dwyer House
 256 Nicklin Way
 WARRAWA QLD 4576

E-MAIL: ahern@ajna.com.au
 PHONE: 07 5482 8202
 FAX: 07 5482 8203

E-MAIL: derry@ajna.com.au
 PHONE: 07 5483 4877
 FAX: 07 5483 4899