

# FORDE



## 12 Thomas Street Noosaville QLD

6 🚗

Forde Property is delighted to present 12 Thomas Street, Noosaville, available for lease for the first time in 14 years.

This is a rare and exceptional opportunity for restaurateurs to relocate to an iconic, freestanding Queenslander.

Situated just 100 meters from Gympie Terrace and the Noosa River, the property is surrounded by a vibrant mix of cafes, restaurants, resorts, retail shops, and office spaces. This highly sought-after precinct captures the essence of the relaxed Noosa lifestyle, offering an inviting ambiance perfect for both locals and visitors.

The stylish two-level Queenslander features a blend of original character and modern amenities. It boasts a

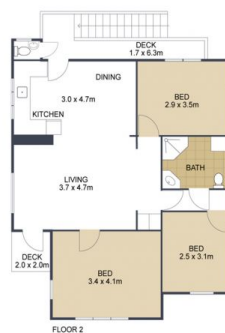
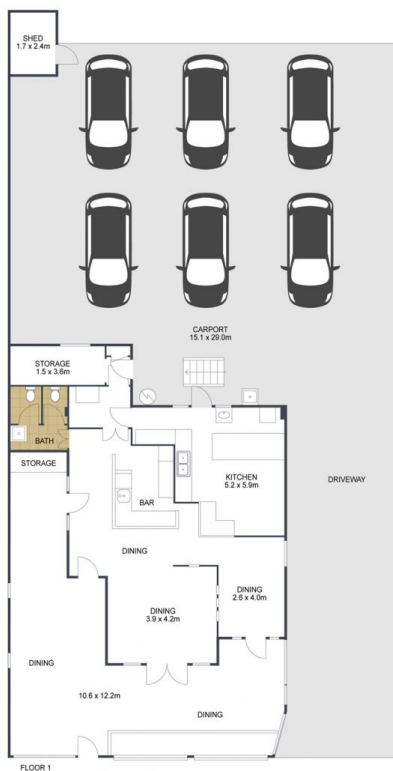
[For full version visit the website](https://www.fordeproperty.com.au)

**Type** : Retail  
**Price** : CONTACT AGENT  
**Building Size** : 240 sqm  
**Land Size** : 506 sqm  
**View** : <https://www.fordeproperty.com.au/lease/qld/sunshine-coast/noosaville/commercial/retail/8281697>



**Donna Ingram**  
07 5447 5554

<https://www.fordeproperty.com.au>



-  3
-  2
-  6

TOTAL: 251m<sup>2</sup>

## 12 Thomas St. NOOSAVILLE

ARTIST'S IMPRESSION ONLY: While every attempt has been made to ensure the accuracy of this floor plan's areas and measurements of doors, windows, rooms and all other items are approximate and no responsibility is taken for any error, omission, or mis-statement. This plan is for illustrative purposes only and should only be used as such by any prospective purchaser. Floor plan by: [www.open2view.com.au](http://www.open2view.com.au)

