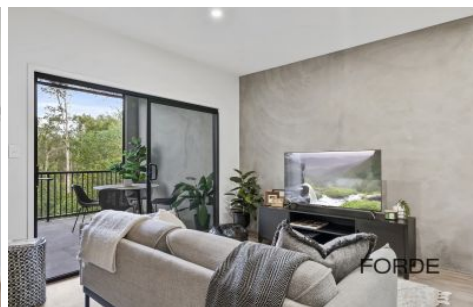


# FORDE



17/64 Gateway Drive Noosaville QLD

2 2 2

Positioned within the highly sought-after Noosaville Smart Hub, 17/64 Gateway Drive presents a rare opportunity to secure a versatile combination residential/commercial property offering the perfect blend of lifestyle and functionality.

Set across two levels, the property features a well-appointed two-bedroom residence complemented by a spacious ground-floor warehouse, making it ideal for those seeking a live/work environment or additional storage space.

Upstairs, the light-filled residence offers open-plan living and dining, a contemporary kitchen, and ducted air-conditioning throughout. Two bedrooms, with one having a north-facing aspect capturing natural light and the tranquil view across the surrounding nature reserve toward

**Type** : Unit  
**Price** : OFFERS OVER \$1.35M  
**Building Size** : 160 sqm  
**Land Size** : 85 sqm  
**View** : <https://www.fordeproperty.com.au/sale/qld/sunshine-coast/noosaville/residential/unit/8650286>



Donna Ingram  
07 5447 5554

[For full version visit the website](https://www.fordeproperty.com.au)

<https://www.fordeproperty.com.au>